

THE SITUATION OF YOUNG PEOPLE IN MALTA

My Way Project Final Conference
Madrid 10/09/2015

What is the situation?

What are we doing about it?

Youth Activity Rate

- The percentage of young people active in the labour market is higher than the EU average; The trend is reversed for the 25 to 64 age group.

Table 1. Activity rate 15-24 in 2014

	Males	Females	Total
Malta	52.9	51.7	52.3
EU 28	44.4	38.9	41.7

Unemployment

- The youth unemployment rate is one of the lowest in the EU 28;
- the youth unemployment ratio dropped from 8.6 per cent in 2005 to 6.2 per cent in 2014

Table 2. Unemployment 15-24 in 2014

	Males	Females	Total
Malta	13.8	9.6	11.8
EU 28	22.6	21.2	21.9

Employment

- The youth employment rate, similar to the activity rate is higher than the EU 28 average;
- There is a significant percentage of youth who are NEET

Table 3. Employment 15-24 in 2014

	Males	Females	Total
Malta	45.6	46.7	46.1
EU 28	34.4	30.6	32.5

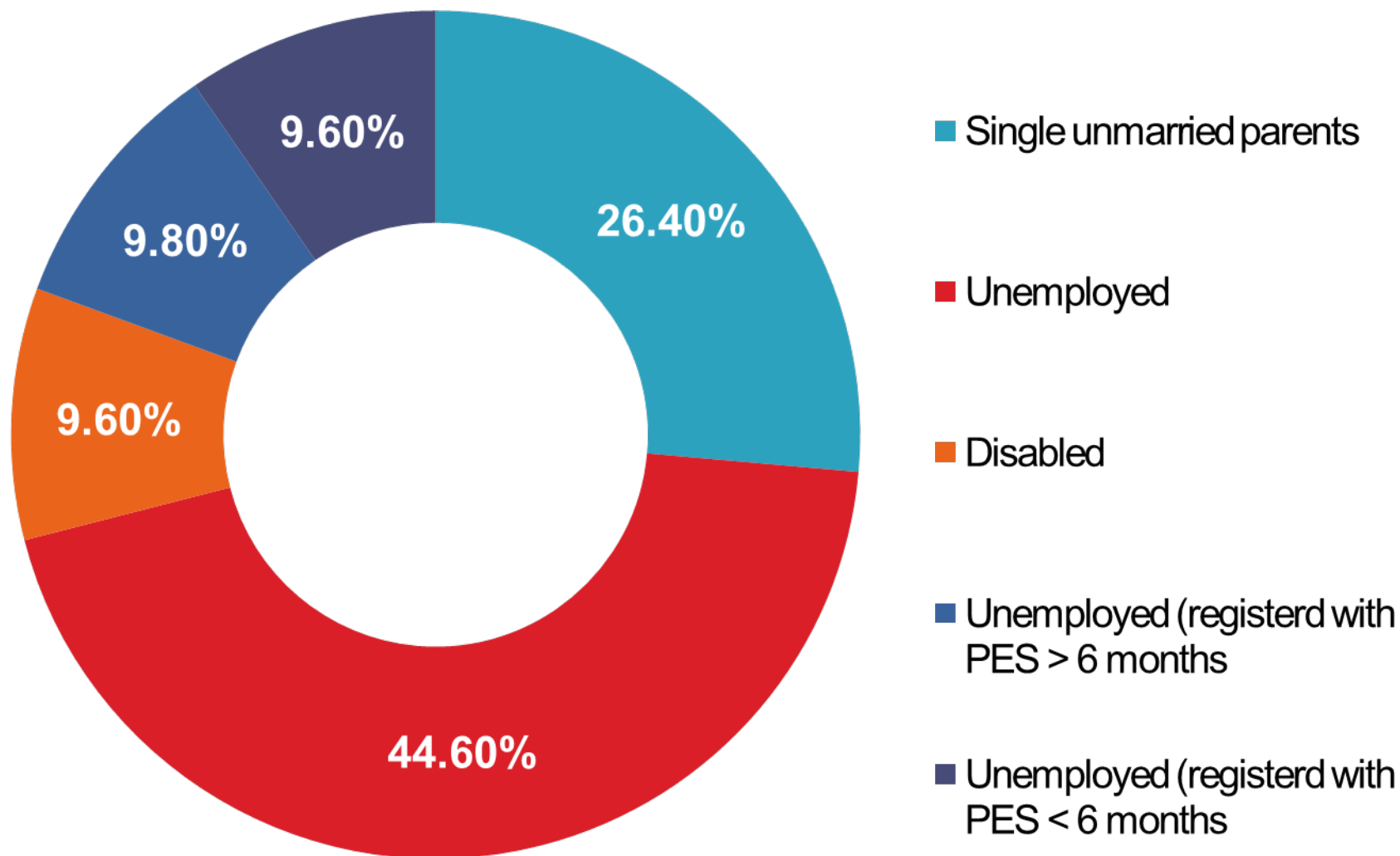
Education

- The rate of early school leavers (ESL) dropped by 12.6 percentage points between 2005 and 2014.
- Though females have had the lower rates the highest drop in ESL rates was recorded among males.
- Although Malta's levels for this indicator declined over the reference period, national values are still higher when compared to EU averages.

Table 4. Early School Leavers 18-24 in 2014

	Males	Females	Total
Malta	22.3	18.3	20.4
EU 28	12.7	9.5	11.1

Inactive Youth (2013)



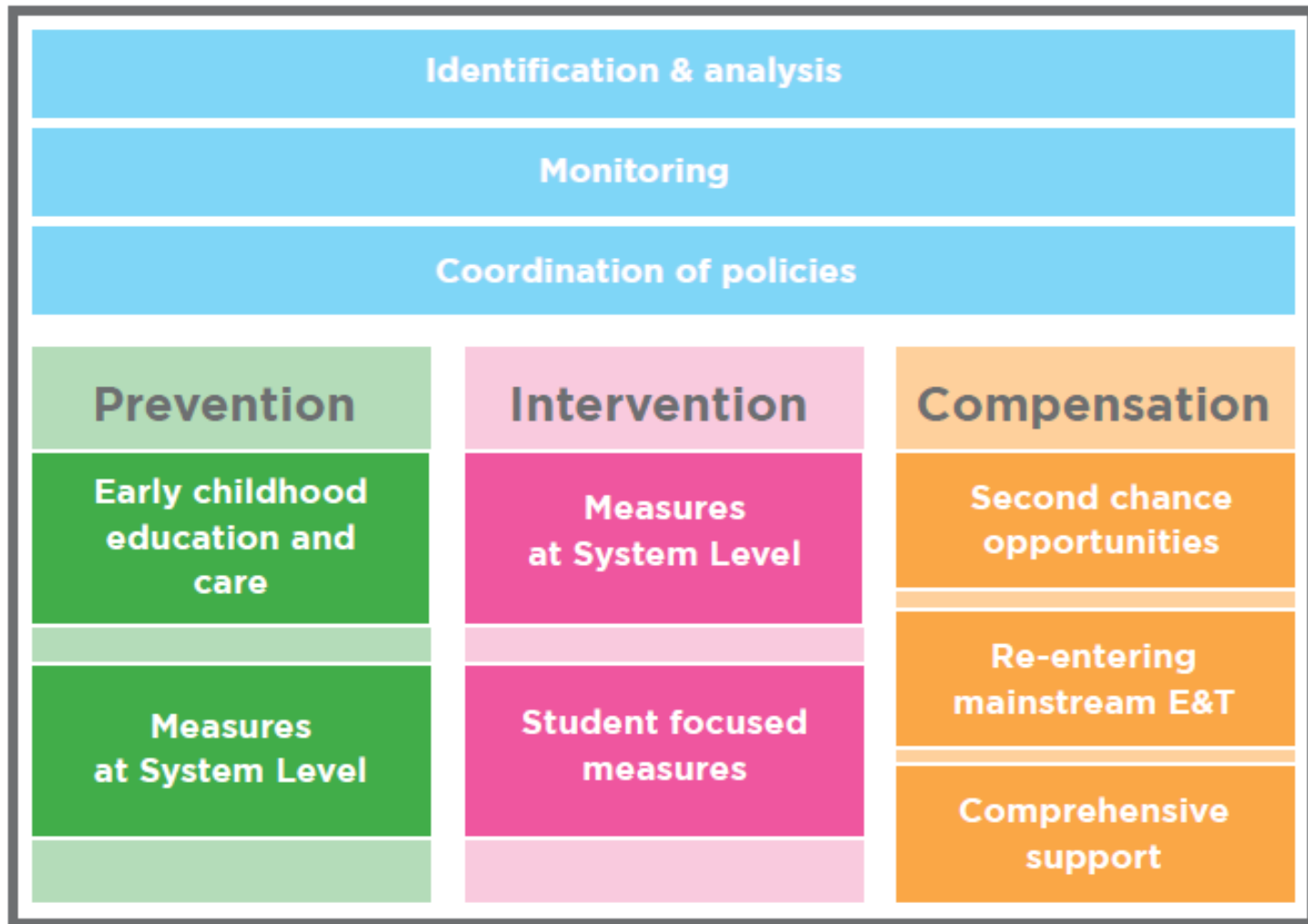
FRAMEWORK FOR THE EDUCATION STRATEGY FOR MALTA 2014-2024

Reduce the gaps in educational outcomes between boys and girls and between students attending different schools, decrease the number of low achievers and raise the bar in literacy, numeracy, and science and technology competence, and increase student achievement;

Support educational achievement of children at-risk-of-poverty and from low socio-economic status, and reduce the relatively high incidence of early school-leavers;
Increase participation in lifelong learning and adult learning;

Raise levels of student retainment and attainment in further, vocational, and tertiary education and training.

Strategies for Tackling ESL



Job+ Youth Guarantee




- NEETs profiled by experts



- 30hrs of direct contact with a youth worker



- 90hrs of training intervention over 6 weeks



- Twelve weeks of work exposure. During these twelve weeks the young people will be entitled to a stipend equal to the minimum wage rate.



- Encouraged to read for vocational education

Second Chance Programmes

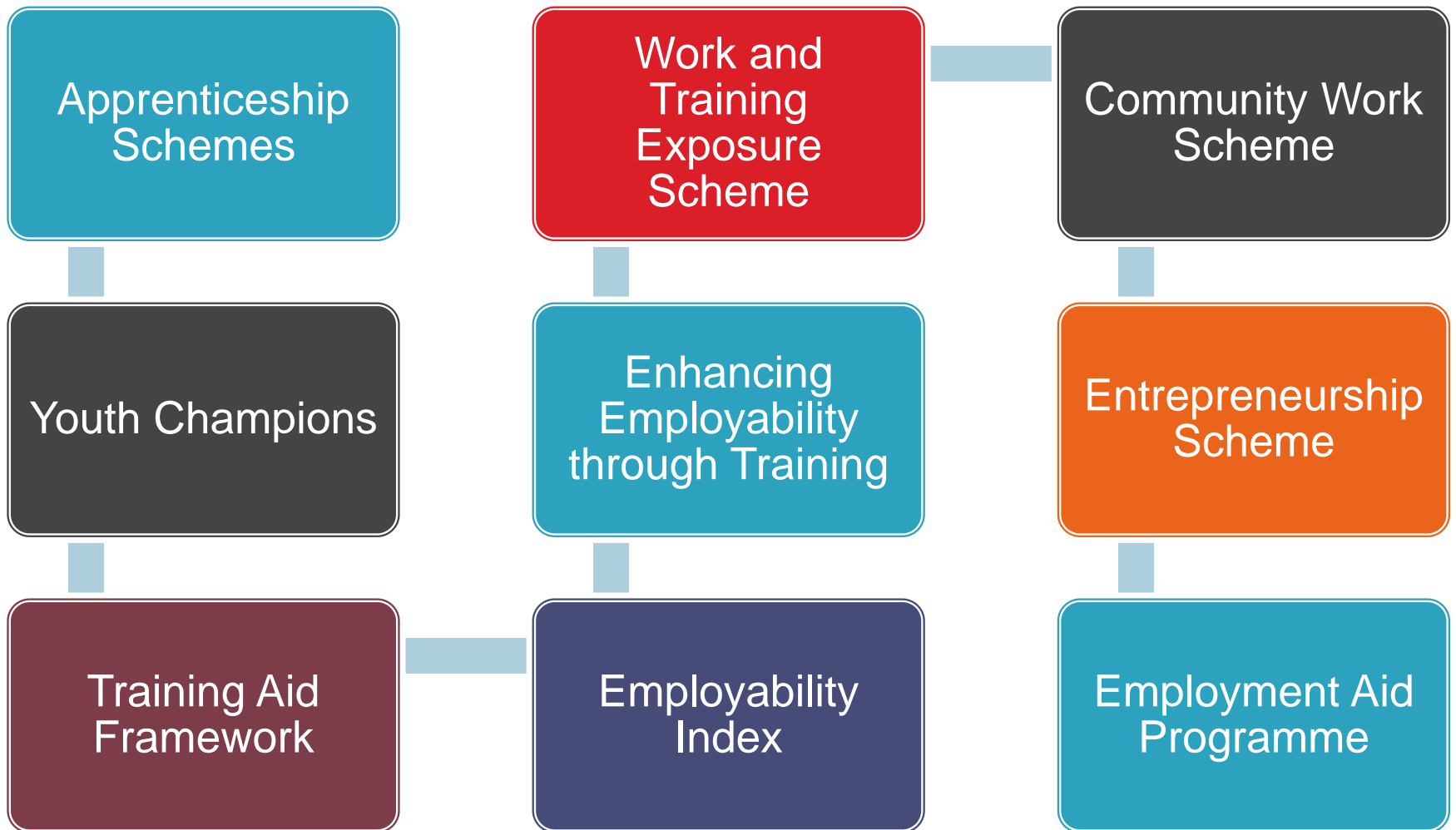
Alternative Learning Programme

Youth.Inc

Foundation Courses

Guze' Ellul Mercer

Employment and Training Corporation Initiatives



Thank you



W: <http://www.agenzijazghazagh.gov.mt>

W: <http://www.youthinfo.gov.mt/>

T: +356 22586700

E: agenzija.zghazagh@gov.mt

